



BAS521

Small-Signal Switching Diodes

Features

VR 250V
I_{FAV} 200mA

Typical Applications

Extreme fast switches

Mechanical Data

Package: SOD523
Terminals: Tin plated leads, solderable per J-STD-002 and JESD22-B102
Polarity: Cathode line denotes the cathode end
Marking: JS

Maximum Ratings (Ta=25 Unless otherwise specified)

PARAMETER	SYMBOL	UNIT	Conditions	VALUE
Repetitive peak reverse voltage	V _{RRM}	V		250
Reverse Voltage	V _R	V		250
Non-Repetitive Peak Forward Surge Current	I _{FSM}	A	t=8.3ms, Half sine-wave	2
Average forward current	I _{FAV}	mA		200
Power dissipation	P _D	mW		150
Junction temperature	T _j			150
Storage temperature range	T _{stg}			-55 to +150

Electrical Characteristics Ta=25 Unless otherwise specified

PARAMETER	SYMBOL	UNIT	Conditions	Min	Max
Maximum Forward voltage	V _F	V	I _F =100mA		1.1
Maximum Reverse current	I _R	nA	V _R =250V		150
Minimum Breakdown voltage	V _R	V	I _R =100uA	250	
Maximum Diode capacitance	C _D				

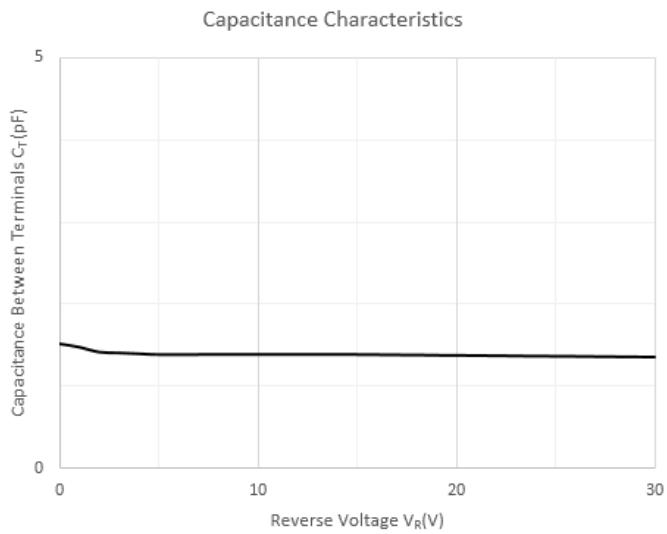
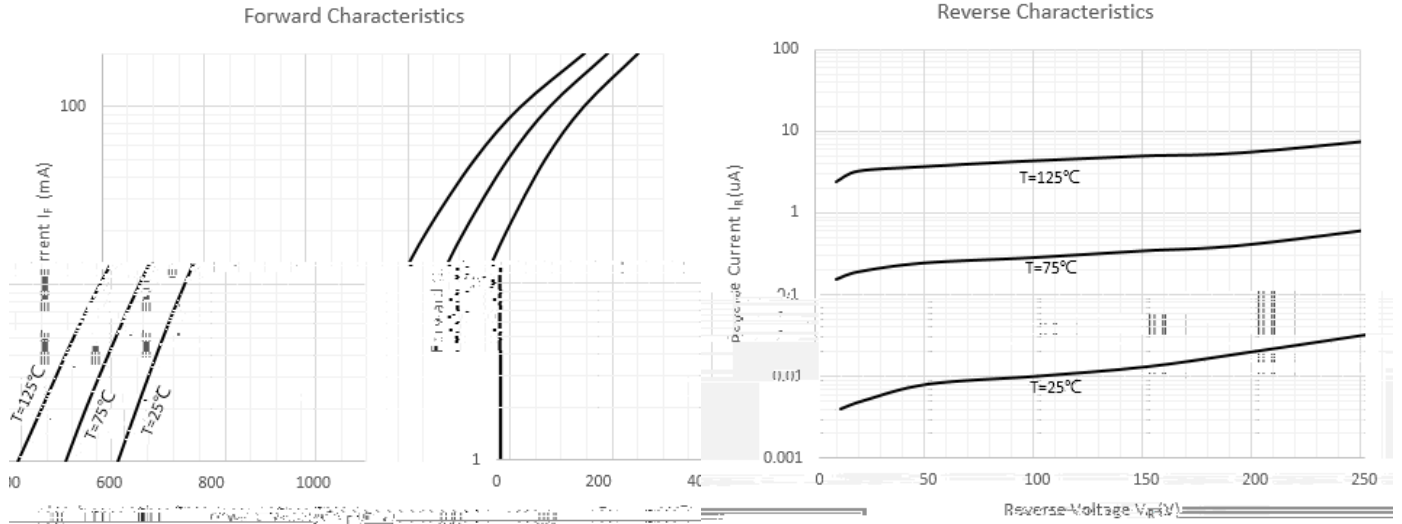


BAS521

Ordering Information (Example)

PREFERRED P/N	PACKING CODE	UNIT WEIGHT(g)	MINIMUM PACKAGE(pcs)	INNER BOX QUANTITY(pcs)	OUTER CARTON QUANTITY(pcs)	DELIVERY MODE
BAS521	F2	Approximate 0.002	8000	80000	320000	7" reel

Characteristics(Typical)

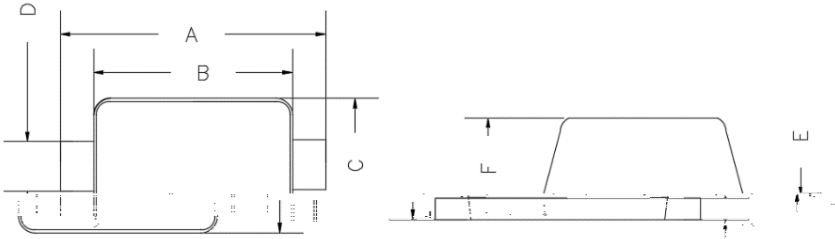




BAS521

Outline Dimensions

SOD-523



TOP VIEW

SIDE VIEW

DIMENSIONS				
DIM	INCHES		MM	
	MIN	MAX	MIN	MAX
A	0.059	0.067	1.500	1.700
B	0.043	0.051	1.100	1.300
C	0.028	0.035	0.700	0.900
D	0.010	0.014	0.250	0.350
E	0.002	0.008	0.050	0.200
F	0.028	0.030	0.700	0.760

Soldering Footprint

